

The Contest JUG



NEWSLETTER OF THE
NORTHERN CALIFORNIA CONTEST CLUB
34456 COLEVILLE PLACE
FREMONT CA 94546

OCTOBER 1980

NUMBER 102

PRESIDENT: K6HNZ
DIRECTORS: WA6ITV, KN6M, WA6VEF

VP/CC: N6TV
JUG Post-Prod: AA6G

SCTY/TREAS: N6KB
JUG EDITOR: K6RU



COMING EVENTS

PROGRAM-OCTOBER MEETING: SS PEP RALLY - SS SCORE COMMITMENTS; LIVE SS QSO DEMONSTRATION; FAMOUS SS TAPE #1; AND MUCH MORE!

OCT.25-26: CQWW DX CONTEST - PHONE

OCT.27: NCCC MEETING, CWA HALL

NOV.1-2: ARRL SS - CW

NOV.15-16: ARRL SS - PHONE

NOV.29-30: CQWW DX CONTEST - CW

DEC.6-7: ARRL 160 METER CONTEST

DEC.13-14: ARRL 10 METER CONTEST

DEC.20: NCCC CHRISTMAS AWARDS BANQUET

FEB.21-22: ARRL DX CONTEST - CW

MAR.7-8: ARRL DX CONTEST - PHONE

PRESIDENT KEN'S MESSAGE

TREMENDOUS. THAT IS THE ONLY WAY TO DESCRIBE OUR RECENT CQP. SEE THE PRELIMINARY SCORES ELSEWHERE IN THIS JUG. OURS IS BY FAR THE BIGGEST AND BEST OF THE QSO PARTIES, AND IT APPEARS THAT THIS YEAR'S PARTICIPATION WILL BE THE BIGGEST EVER. NOTE ALL THOSE EXCEEDING 2000 QSO'S. LIKE THE FOUR MINUTE MILE, ONCE N6BV BROKE THE BARRIER MANY OTHERS FOLLOWED THE NEXT YEAR. I BELIEVE WE WILL SEE SOMEONE REACH 2500 Q'S SOON, SUNSPOTS PERMITTING. DON'T KNOW YET HOW MANY COUNTIES WERE ON THIS YEAR, BUT IT MUST HAVE BEEN WELL OVER 50 (K9BG HAD 51). CONGRATULATIONS TO DENNIS, N6QW AND ALL WHO PARTICIPATED. GET THE LOGS TO DENNIS ASAP SO RESULTS CAN BE FINALIZED BEFORE OUR CHRISTMAS BASH.

(CON'T ON P.2)

HEAR IT FROM BOB, VP/CC

SWEEPSTAKES IS JUST AROUND THE CORNER, AND IF CONDITIONS ARE ANYTHING LIKE THEY WERE FOR THE CQP IT OUGHT TO BE AN EXCITING CONTEST. WITH 10 AND 15 METERS LOOKING GREAT, OUR CLUB IS VIRTUALLY ASSURED OF TAKING OUR SIXTH STRAIGHT TITLE. BUT WE CAN'T DO IT WITHOUT YOUR SUPPORT! LET'S SEE HOW MANY OF YOU ARE CAPABLE OF EARNING A KB 1000 AWARD, OR EVEN A KB 2000. IF YOU DON'T THINK YOU CAN PUT IN A FULL BORE EFFORT, WHY NOT CHALLENGE ANOTHER CLUB MEMBER TO EITHER PUT UP OR SHUT UP ABOUT HOW GREAT AN OPERATOR HE IS. THE WINNER SHOULD AT LEAST BE ENTITLED TO A FREE STEAK DINNER!

(CON'T ON P.2)

PRESIDENT KEN (CON'T)

2

VP/CC, BOB (CON'T)

OUR OCTOBER 27 MEETING WILL BE OUR SS PEP RALLY. THIS IS OUR BIGGEST AND BEST MEETING OF THE YEAR. IT WILL FEATURE SCORE COMMITMENTS, AN SS TAPE, A LIVE PHONE AND CW QSO DEMONSTRATION, AND A RAFFLE FOR A SUPEREX HEADSET WITH MIKE. DON'T MISS IT! LOG, DUPE AND SUMMARY SHEETS WILL BE AVAILABLE. THE SS COORDINATORS WILL SOON BE ON THE PHONES GENERATING ENTHUSIASM AND INSURING THAT ALL OPERATORS HAVE STATIONS AND ALL STATIONS HAVE OPERATORS. GIVE THEM YOUR SUPPORT.

OUR AWARDS PROGRAM WILL BE THE SAME AS LAST YEAR AND IS DETAILED IN THIS ISSUE. WILL THIS BE THE YEAR FOR THE AWARD OF THE FIRST KB-3000? THE CQP SCORES INDICATE IT IS A DEFINITE POSSIBILITY.

THE SS HAS TRADITIONALLY BEEN THE NCCC'S BIGGEST EFFORT OF THE YEAR AND WE HAVE THE GAVELS TO SHOW FOR IT. BAND CONDITIONS SHOULD BE EXCELLENT THIS YEAR. LET'S KEEP NCCC ON TOP OF THE SS HEAP WITH ALL STATIONS ON THE AIR AND ALL OPERATORS PUTTING IN THE BIGGEST EFFORT THEY CAN MANAGE. A NEW RECORD SET THIS YEAR WILL PROBABLY STAND UNTIL THE NEXT SUNSPOT MAXIMUM.

SEE YOU AT THE OCT.27 MEETING AT OUR BIG NEW MEETING ROOM AT 29868 MISSION BLVD., HAYWARD (NEAR INDUSTRIAL PARKWAY).

KB IN SS BOTH MODES! KEN, K6HNZ

SWEEPSTAKES COORDINATORS ARE GOING TO TRY AND GIVE EACH OF YOU A PHONE CALL, BUT JUST IN CASE YOU'RE HARD TO REACH, HERE ARE SOME IMPORTANT THINGS TO REMEMBER:

- 1) CW SS IN NOV.1-2; PHONE SS IS NOV 15-16.
- 2) LOG DEADLINE: DEC.16, '80 (MARK THIS ONE ON YOUR CALENDAR TOO).
- 3) THE BIG SS MEETING IS OCT.27 (SEE KEN'S MESSAGE FOR DETAILS)
- 4) REMEMBER, WE'RE ALL IN THIS CONTEST TOGETHER. IF YOU HEAR A VE 8 WAY UP AT THE HIGH END OF 10 METERS CALLING CQ, LET YOUR FELLOW CLUB MEMBERS KNOW ABOUT IT! ANOTHER THING YOU MIGHT TRY, PASS ALONG A FRIENDLY "KB" TO THAT POOR NCCC'ER WHO KEEPS CALLING CQ WITHOUT ANYONE COMING BACK. IT'S NICE TO KNOW THAT YOU'RE STILL GETTING OUT!
- 5) DON'T FORGET TO CHECK INTO THE 2 METER NET AFTER THE CONTEST TO REPORT YOUR SCORE. IF YOU DON'T HAVE 2 METERS, TRY 3815 KHZ.
- 6) AFTER YOUR LOGS HAVE BEEN DUPED, MAIL A COPY OF YOUR SUMMARY SHEET TO N6TV SO THAT WE CAN TABULATE TOTAL CLUB SCORE.

LET'S BREAK OUR OLD RECORD AND ESTABLISH A CLUB AGGREGATE TOTAL WHICH WILL LAST FOR YEARS AND YEARS. THIS IS THE BEST TIME TO DO IT, BEFORE THE SUNSPOTS START FADING AWAY. GOOD LUCK SS OM, SEE YOU IN THE PILE-UPS! KB!!

73, BOB, N6TV

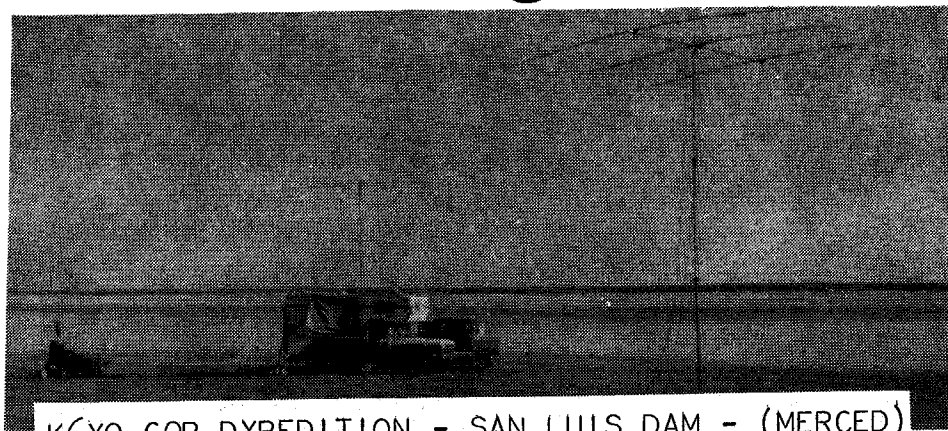
1980 SWEEPSTAKES CLUB-SPONSORED AWARDS

1. KB-3000, AWARDED TO ANY SINGLE OPERATOR WHO ACHIEVES A SS TOTAL OF OVER 3,000 QSO'S IN THE 1980 CONTEST. (AFTER DUPES)
2. KB-2000, AWARDED TO ANY SINGLE OPERATOR WHO MAKES 2,000 QSO'S AFTER DUPES. PRIOR WINNERS WHO ACHIEVE 2,000 Q'S WILL RECEIVE A NEW BASE FOR PAST AWARDS.
3. KB-1000, AWARDED TO ANY SINGLE OPERATOR WHO MAKES OVER 1,000 Q'S (DUPED) IN EITHER OF THE TWO SS WEEKENDS. PAST WINNERS WHO MAKE THIS GOAL WILL RECEIVE A NEW BASE FOR HIS PAST AWARD.
4. "BIG GUN", A TROPHY AWARDED TO THE HIGH SCORING SINGLE-OP IN EACH MODE.
5. "LITTLE GUN", A TROPHY TO THE HIGH SCORING SINGLE-OP IN EACH MODE.
A "LITTLE GUN" STATION IS DEFINED AS ONE HAVING NO MORE THAN A TRI-BANDER, PLUS WIRES ON 40 AND 80.
6. A TROPHY TO THE OPERATOR WITH THE MOST IMPROVED SCORE OVER THE PREVIOUS YEAR.
7. SS GAVEL, IF WON BY NCCC, GOES TO THE HIGHEST SCORING STATION OPERATOR, BOTH MODES COMBINED. NO OPERATOR MAY WIN THE GAVEL MORE THAN ONCE.
8. HANDSOME CERTIFICATES, WITH AN ENTRY LEVEL OF 500 QSO'S, DUPED.

TO BE ELIGIBLE FOR ANY AWARD, A SS SUMMARY SHEET(S) MUST BE SENT TO N6TV. THE KB-3000, -2000, -1000 TROPHIES ARE ALL MUTUALLY EXCLUSIVE. THE DECISIONS OF THE NCCC AWARDS COMMITTEE ARE FINAL.

CQP

1980



K6XO CQP DXPEDITION - SAN LUIS DAM - (MERCED)

THE CALIFORNIA QSO PARTY IS NOW HISTORY. THIS YEAR'S BASH FEATURED FOUR CALIF. STATIONS THAT BROKE THE OLD SINGLE OP RECORD. THE NEW RULE THIS YEAR GIVING 3 POINTS PER CW QSO MAY WELL DETERMINE THE ULTIMATE WINNER. AS OF THIS WRITING 51 OF THE 58 CALIF. COUNTIES WERE CONFIRMED AS ON THE AIR. JUDGING BY THE NUMBER OF CLEAN SWEEPS BY CALIF. STATIONS, OUT OF STATE ACTIVITY WAS WIDE-SPREAD. EARLY REPORTS OF CLAIMED SCORES ARE AS FOLLOWS:

N6BT(WA6VEF OP)	2246	X	58	371	CW
N6TR	2344	X	58	176	CW
N6RZ(WB6SHD OP)	2380	X	58	77	CW
N6BV	2150	X	56	500+	CW
W6SZN	1996	X	57		
A16V	1940	X	56		
W6TPH	1613	X	58		
6RO	1140	X	55		
K6HNZ-GLEN/COL	900	X	55	Ø	CW
AE6U	654	X	51		
W6JQC	545	X	50		
*K6YA(M/M)MARIN	470	X	47		
W6BYH	441	X	49		
*AA6DX(M/M) GLEN/ COL/BUTTE	211	X	?		

*N6QW-NEV/PLA	260	X	41
KN6K	240	X	33
N6SF	219	X	41
*WB6BYU-ALP/AMA	45	X	17
*N6AU-LAS/PLU	35	X	19
*K6XO-MER (M/M)	2248	X	58

OUT-OF-STATE

K9BG -ILL	500	X	51
W7CB -ORE	200	X	44

COUPLE OF OTHERS REPORTED HIGHER SCORE THAN K9BG.

73, DENNIS, N6QW
CHMN. 1980 CQP

*- DENOTES DXPEDITION

CQP DXPEDITION REPORTS

K6HNZ-GLENN/COLUSA Co. LINE: KEN AND KAY TOOK OFF FOR LOCATION THURSDAY OCT. 2 IN A LARGE RV WITH INTEGRAL 4 KW GENERATOR. KEN SINGLEHANDEDLY ERECTED THREE POLES AND A 400' LONG WIRE WITH SPECIAL MATCHING SECTIONS FOR ALL BANDS. MURPHY WAS MUCH IN EVIDENCE AS THE ANTENNA WOULD NOT LOAD PROPERLY ON 10 AND 15. AFTER BLOWING A BALUN, KEN HAD TO SETTLE FOR 50 WATTS ON THOSE BANDS. NEXT, THE GENERATOR HASH TURNED OUT TO BE 10 OVER S9 ON MOST BANDS. IN SPITE OF THESE PROBLEMS KEN DID A GREAT JOB WITH 900 Q'S X 55. 20 WAS HIS BIG BAND!

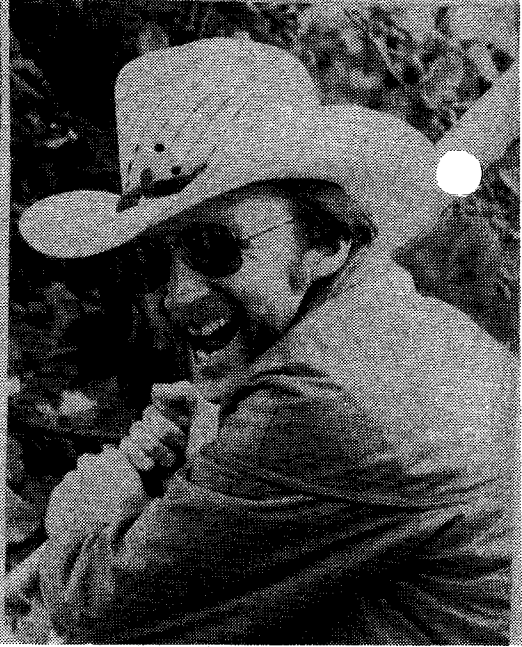
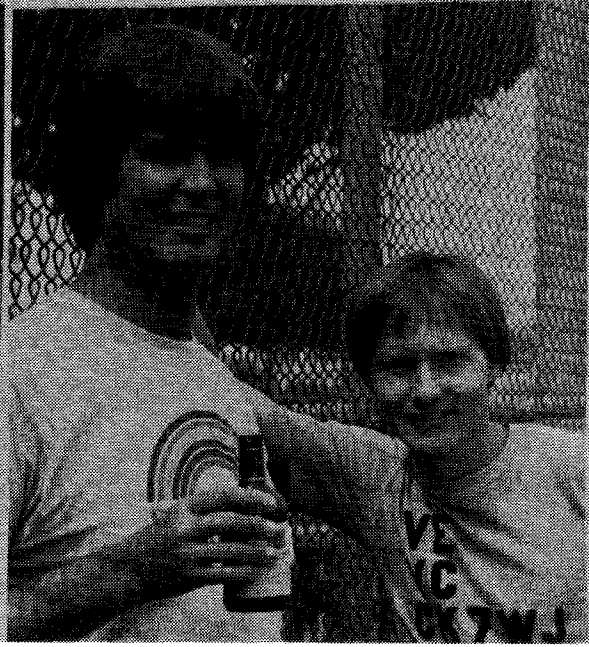
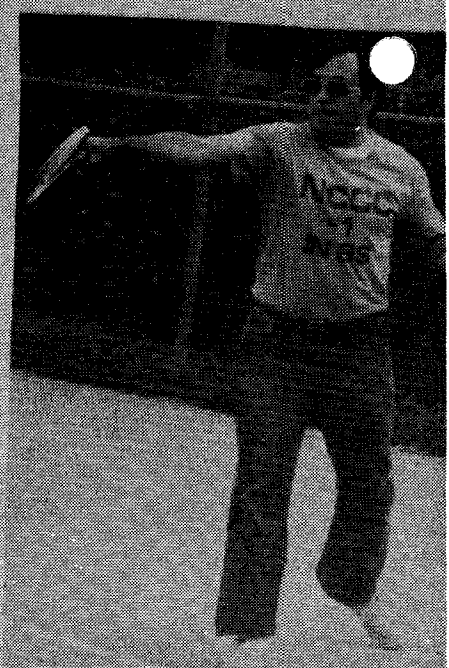
AA6DX+KN6Q++-GLENN/COLUSA/BUTTE: MARK AND HIS GANG EMBARKED IN A VOLVO TOWING TWO GENERATORS. TWO XMTRS AND SEVERAL ANTENNAS WERE INCLUDED. THEY STARTED CQP ON TIME AND AFTER 150 Q'S, HIT THE ROAD FOR BUTTE. ON THE WAY THE HEAT OF DAY GOT TO THE CAR WATERPUMP AND IT EXPLODED NEAR OROVILLE. THEY WERE STUCK IN BUTTE FOR THE REST OF CQP. FINALLY A NEW PUMP ARRIVED BY YELLOW CAB. MOST OF THE REST OF THE CONTEST WAS SPENT REPAIRING THE CAR. ARRIVED HOME 3:30 AM MONDAY.

K6XO+K6RU+K6SEM+K6YT-MERCED Co: ARRIVED SAN LUIS RESERVOIR AT 7:30 AM SAT. AND HAD IT ALL RUNNING BY 10:30 AM (SEE PHOTO ABOVE). THEY HAD TWO STATIONS WITH SB200 AMPS, 15M YAGI, TRIBANDER, 40M VERT AND WIRES FOR 75. EVERYTHING WORKED FB. LOTS OF BUGS AT NIGHT, BUT NOT IN THE GEAR. FOR ONCE, MURPHY LOST.

1980 SUNNYVALE OLYMPICS

RESERVED

<u>Sept 14</u>	<u>9AM-Dark</u>	<u>I</u>
<u>date</u>	<u>time</u>	<u>area</u>
<u>N. Calif. Contest Club</u>	<u>Club</u>	<u>Ortega</u>



NEW MEMBER

N6BSU-KAREN
 KAREN A. PETERSON
 P.O.Box 970
 APTOS CA 95003 408)722-4349

KAREN IS 26 YEARS OLD AND HOLDS AN ADVANCED CLASS LICENSE. SHE HAS BEEN LICENSED FOR TWO YEARS AND WAS FORMERLY KA6DZS. KAREN HAS A NEAT STATION CONSISTING OF TS820-S, 2 X 8874's, 4 EL TRI-BAND QUAD, AND A 402BA AT 86'. SHE HAS PARTICIPATED IN NOVICE ROUND-UP AND FIELD DAY. WELCOME TO NCCC, KAREN.

NEW MEMBER

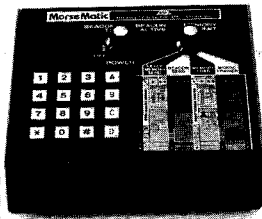
WA6HKP-MIKE
 MICHAEL T. RITZ
 P.O.Box 350
 SANTA CRUZ, CA 95061 408)423-6475

MIKE IS 27 YEARS OLD AND HOLDS AN ADVANCED CLASS LICENSE. HE HAS BEEN ON THE AIR FOR 6 YEARS, AND WORKS FOR CALIFORNIA MICROWAVE. HIS STATION CONSISTS OF A TS820S, HW32-A, FRG-7, FT227R, 4BTU AND LONG WIRES. HE OPS 60% PHONE AND 40% CW. WELCOME ABOARD, MIKE.

MORE KEYER FEATURES FOR LESS COST

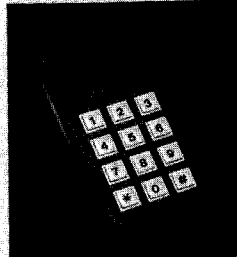
AEA Invites You to Compare the AEA Keyer Features to Other Popular Keyers on the Market.

MM-1



MorseMatic™

KT-1



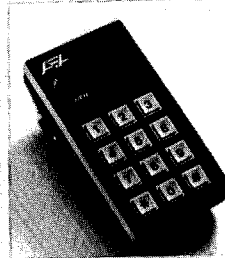
Keyer Trainer

MT-1



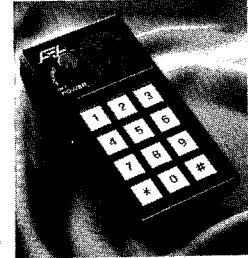
Morse Trainer

CK-1



Contest Keyer

MK-1



Morse Keyer

IMPORTANT KEYER AND/OR TRAINER FEATURES	AEA	AEA	AEA	AEA	AEA	COMPETITOR			
	MM-1	KT-1	MT-1	CK-1	MK-1	A	B	C	D
Speed Range (WPM)	2-99	1-99	1-99	1-99	2-99	8-50	5-50+	?	8-50
Memory Capacity (Total Characters)	500			500		400	100/400	400	
Message Partitioning	Soft			Soft		Hard	Hard	Hard	
Automatic Contest Serial Number	Yes			Yes		No	No	No	
Selectable Dot and Dash Memory	Yes	Yes		Yes	Yes	No	No	No	No
Independent Dot & Dash (Full) Weighting	Yes	Yes	Yes	Yes	Yes	No	No	No	No
Calibrated Speed, 1 WPM Resolution	Yes	Yes	Yes	Yes	Yes	No	No	Yes	No
Calibrated Beacon Mode	Yes			No		No	No	No	
Repeat Message Mode	Yes			No		Yes	Yes	Yes	
Front Panel Variable Monitor Frequency	Yes	Yes	Yes	Yes	Yes	Yes	No	Yes	Yes
Message Resume After Paddle Interrupt	Yes			Yes		No	No	Yes	
Semi-Automatic (Bug) Mode	Yes	Yes		Yes	Yes	No	No	No	No
Real-Time Memory Loading Mode	Yes			Yes		Yes	Yes	No	
Automatic Word Space Memory Load	Yes			Yes		No	No	Yes	
Instant Start From Memory	Yes			Yes		No	No	Yes	
Message Editing	Yes			Yes		No	No	No	
Automatic Stepped Variable Speed	No	No	No	Yes	No	No	No	No	No
2 Presettable Speeds, Instant Recall	No	No	No	Yes	No	No	No	No	No
Automatic Trainer Speed Increase	Yes	Yes	Yes						No
Five Letter or Random Word Length	Yes	Yes	Yes						No
Test Mode With Answers	Yes	Yes	Yes						No
Random Practice Mode	Yes	Yes	Yes						Yes
Standard Letters, Numbers, Punctuation	Yes	Yes	Yes						Yes
All Morse Characters	Yes	Yes	Yes						No
Advertised Price	\$199.95	\$129.95	\$99.95	\$129.95	\$79.95	\$139.95	\$ 99.50/ \$139.50	\$229.00	\$129.95

OPTIONS:

- MT-1P** (portable version of MT-1) with batteries, charger, earphone **\$139.95**
- ME-1** 2000 character plug-in memory expansion for MM-1 **\$ 59.95**
- AC-1** 600 Ma. 12 Volt wall adaptor for MM-1 with ME-1 **\$ 14.95**
- AC-2** 350 Ma. 12 Volt wall adaptor for all AEA keyer and trainer products except MM-1 w/ ME-1 **\$ 9.95**
- DC-1** Cigarette lighter cord for all AEA keyers and trainers except MT-1P **\$ 5.95**
- MT-1K** Factory conversion of MT-1 to KT-1 **\$ 40.00**

PRICES AND SPECIFICATIONS SUBJECT TO CHANGE WITHOUT NOTICE OR OBLIGATION.

All our keyers (except the MT-1) will operate with any popular single lever or lambic squeeze paddle and will key any type of modern amateur transmitter with no external circuitry required. AEA keyers are as easy to operate as a four function calculator. The internal AEA computers are all pre-programmed for the features shown above. Each AEA product is fully RF protected and receives a complete elevated temperature burn-in and test before it is shipped from the factory.

Ask a friend how he likes his AEA keyer compared to anything else he has ever tried, then **JUDGE FOR YOURSELF**. See the AEA keyer and trainer family at your favorite dealer.

Advanced Electronic Applications, Inc., P.O. Box 2160, Lynnwood, WA 98036. Call 206/775-7373

AEA Brings you the Breakthrough!



999 Howard Ave.
Burlingame Calif.
94010

AVAILABLE FROM:

(415) 342-5757

CLASSIFIED

6

MORE CQP REPORTS

FOR SALE - BEAUTIFUL C-LINE, R4C WITH NB, 1.5, .5, .25 FILTERS; MANY AUX XTLS. T4XC, P.S./SPKR, STATION CONTROL CONSOLE C-4 W/PHONE PATCH, CLOCK, REMOTE COAX SWITCH. \$1,200, FLEXIBLE. DEAN STRAW, N6BV 415)386-6153, 873-9393

FOR SALE - JOHNSON AMP. PR OF 4-400A'S, INCLUDING PS AND CONSOLE. \$395. A16V.

- COLLINS 32S-1, 75S-1, 516-B

PS. \$495 A16V

- COLLINS 62S-1 2 AND 6 MTR

TRANSVERTER. \$695. A16V

WANTED - R4C, ALPHA 77, HENRY 3K
A16V PHONE: 916)273-4570

FOR SALE - STEEL TRI-EX 40' TOWER WITH HOUSE BRACKET AND HINGED BASE. \$200 AL, WB6FCR (415)584-0860.

FOR SALE - COLLINS R-390 GENERAL COVERAGE RECEIVER. WORKS, BUT NEEDS WORK. \$100 OR BEST OFFER. W1ARR/6 367-9388 (415)

CAC REPORT

THE CAC IS STUDYING TO DETERMINE WHETHER OR NOT TO ELIMINATE FM AS A PERMISSABLE MODE IN ARRL VHF CONTESTS, PARTICULARLY THE JUNE AND SEPTEMBER QSO PARTIES. THE VOTE WILL BE DETERMINED LARGELY FROM INPUTS RECEIVED FROM CONTESTERS AT LARGE. CONTACT ME WITH YOUR OPINIONS.

73, ALAN, K6XO

WB6BYU -ALP/AMA: THE MAN STRODE UP A 9100 FOOT HIGH MOUNTAIN WITH A 65# PACK ON HIS BACK. INCLUDED IN IT WAS A QRP HW-8 RIG, BATTERIES, ACCESORIES, 135', 33' DIPOLES, AND A 40 MTR DELTA-LOOP. AFTER TYING THE WIRES TO A FEW SCARCE TREES HE MADE 45 Q'S AND 17 STATES IN THE CQP. A REALLY GOOD EFFORT. -TNX N6QW

WA6ZLA - MEND: BOB DID IT THE HARD WAY! AFTER STARTING IN THE CQP HIS RIG STARTED GETTING INTO A NEIGHBOR'S HEARING AID. SOON, THE NEIGHBOR APPEARED WITH A GUN AND THREATENED TO BLOW BOB'S HEAD OFF. THE POLICE WERE SUMMONED AND REMOVED THE NEIGHBOR. BOB THEN CONTINUED THE CONTEST WITH A LOADED PISTOL ON HIS OPERATING TABLE! (AH, LIFE IN THE FAR NORTH) -TNX, AA6DX

ANOTHER TITBIT FROM ADAM, N6QR

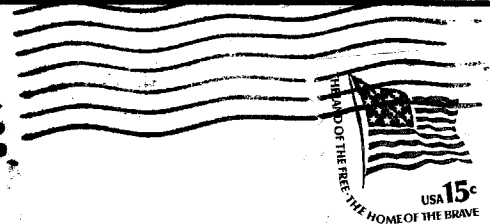
AT OUR RECENT DINNER MEETING, ENCOURAGED BY THE TOUNGE-LOOSENING EFFECTS OF THE JUG BEHIND THE BAR, A WELL-KNOWN CW OP WAS HEARD TO CONFIDE: " I MADE A DIDIDIDIDIDI, AND SOON BECAME A DAHDAH".

COMING UP

BoD MEETING: NOVEMBER 6

NOVEMBER JUG DEADLINE: NOVEMBER 10

THE CONTEST JUG-PUBLISHED MONTHLY BY THE NORTHERN CALIFORNIA CONTEST CLUB
34456 COLEVILLE PLACE
FREMONT, CA 94536



FIRST CLASS
FIRST CLASS
FIRST CLASS

N6SF Expires 06/81
Mr. Charles K. Epps
5-A Buena Vista Terrace
San Francisco, CA 94117